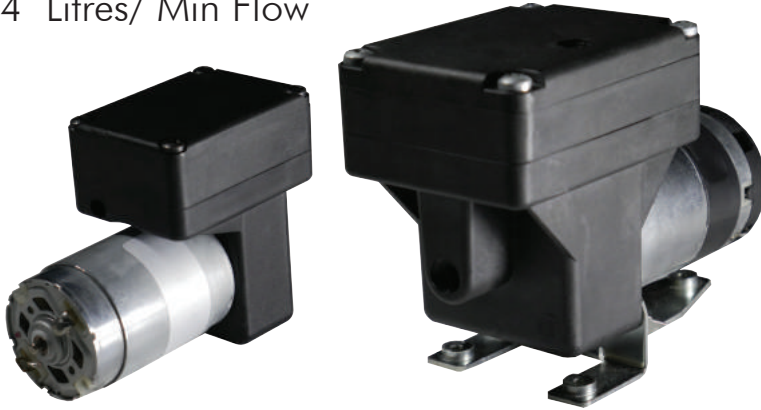


D16 & D34 SERIES

OIL FREE - VACUUM PUMP ONLY DIAPHRAGM PUMP

PERFORMANCE

- 16 - 34 Litres/ Min Flow



- Efficient, low current draw motor providing long life operation from battery power sources.
- Ultra-lightweight design compared with competitive technologies of comparable flow rate.
- Oil-free, maintenance free operation.
- Innovative diaphragm design provides flow rates previously only achievable from much larger pumps.
- Robust construction - ideal for portable applications.
- Can be used in any orientation.



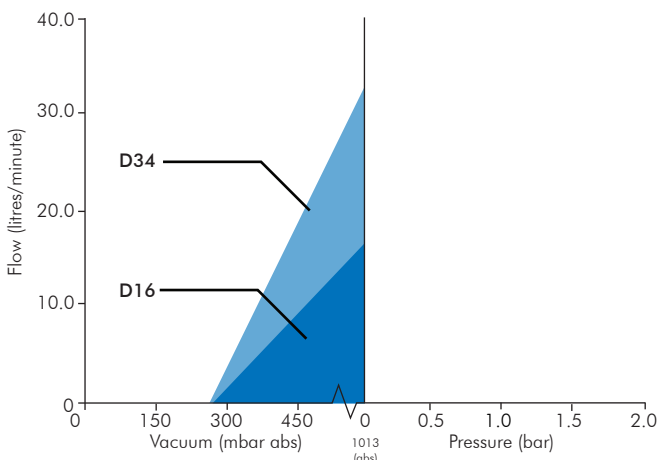
APPLICATIONS

- MEDICAL SUCTION & PORTABLE UNITS
- AIR MONITORING
- PICK & PLACE
- GAS ANALYSERS
- MEDICAL DEVICES
- ASPIRATORS
- VACUUM HOLDING MACHINES

IDEAL FOR



PERFORMANCE



PUMP MATERIALS

COMPONENT	MATERIAL
HEAD	NYLON
VALVES	SARLINK
DIAPHRAGM	SARLINK/ EPDM



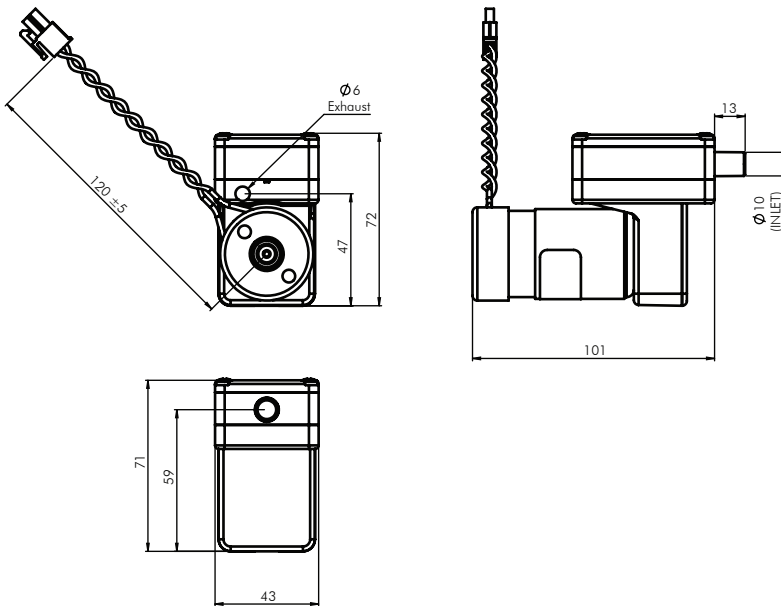
- 12V

D16 & D34 SERIES

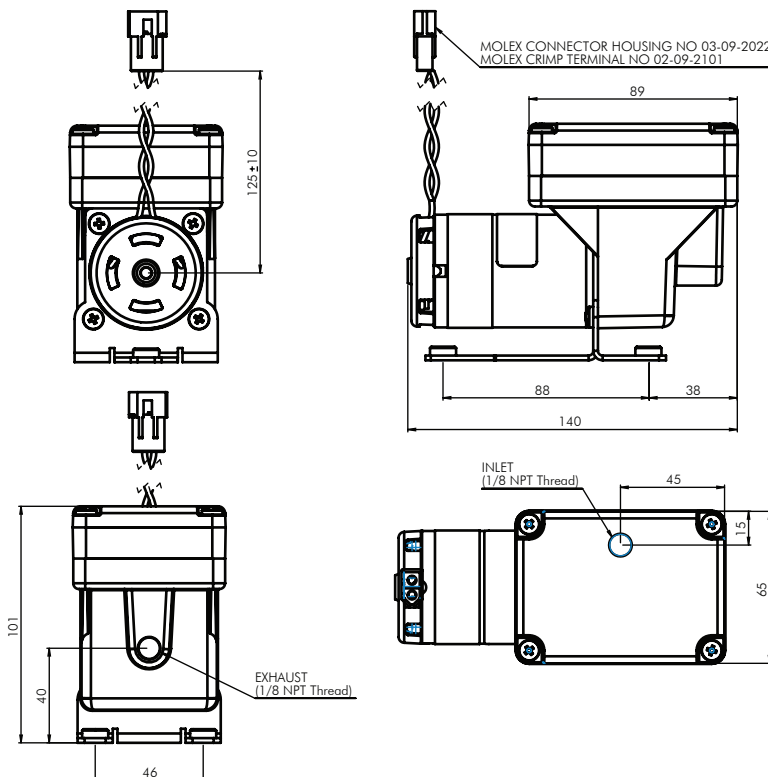
OIL FREE - VACUUM PUMP ONLY DIAPHRAGM PUMP

DIMENSIONS (MM)

D16 - 333G



D34 - 780G




VOLTAGE 12V DC

MODEL	OPERATING CURRENT	MAX LOAD	FUSE RATING
D16	0.5A	1.0A	3.0A
D34	2.5A	3.4A	10.0A

PERFORMANCE

MODEL	MAX FLOW (L/MIN)	MAX VAC mbar (abs)	MAX TEMP - (OPERATING)
D16	16.0	250	40 °C
D16	34.0	250	40 °C



BESPOKE DESIGN PUMPS

Charles Austen pumps offer the ability to design and manufacture bespoke pumps to fit your requirements perfectly. In fact it's our speciality and what sets us apart from the wider one-trick pony market.

With everything from tool making to assembly carried out in house we have total control over every aspect of the process ensuring outstanding quality and product reliability.

MOTOR COMPLIANCE

Motors comply with the following EMI (electro magnetic interface) test specifications:

- EN55011 Terminal Voltage Disturbance
- EN55022 Radiated Emission
- CISPR 14/EN55014 Terminal Voltage Disturbance

Motors are RoHS compliant.

Please note - it is important that you ensure the motor specification stated and the range of materials offered in the pump are compatible with the performance, environmental limitations and chemical resistance requirements of the application. For further information or details of our extensive range of pumps, contact our technical sales office who will be pleased to help you select the most suitable pump for your application.