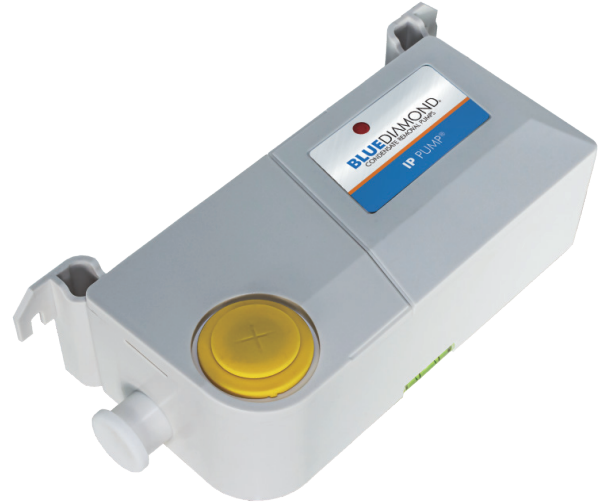


PERFORMANCE

MAX FLOW	MAX HEAD
35 L/ HOUR	15 METRES

The IP Pump is an IP65 rated Condensate Pump, designed to be versatile for a variety of mounting locations and environments.



IP65

Fully potted electrics and with an IP65 rating allows the IP Pump to be mounted directly in the drain pan. Easy to remove drainage points allow for a fast and adaptable install.



POWERFUL PUMPING

Flow rates remain powerful when high lift/head applications are applied. This gives a competitive edge and versatility in every installation.



NO

MAINTENANCE

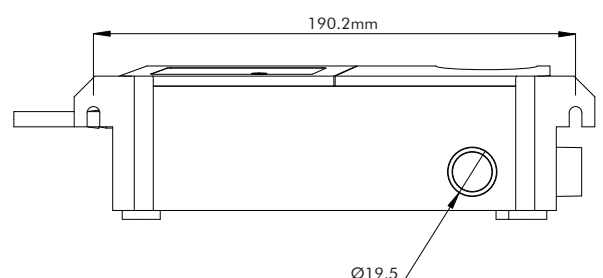
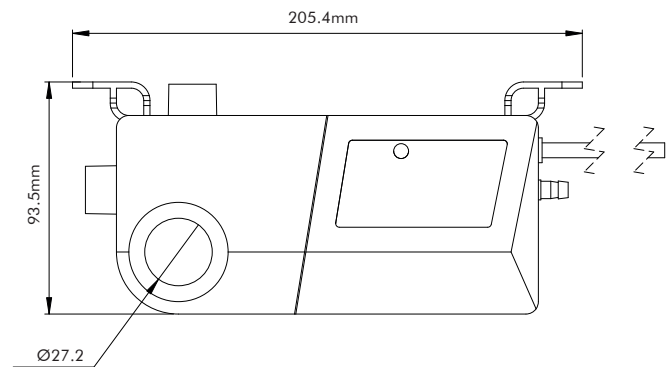
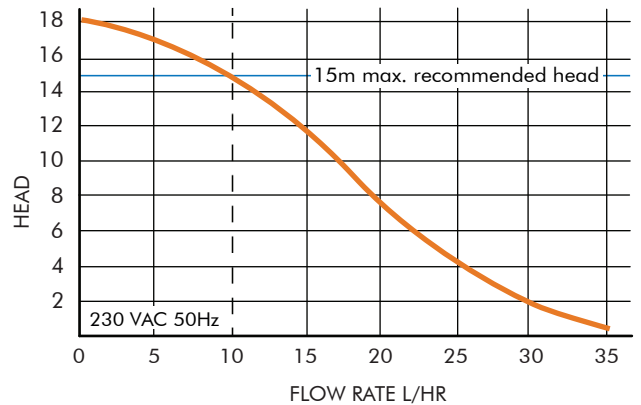
No servicing, no maintenance, no replacement parts. Nothing! A true fit and forget condensate pump.



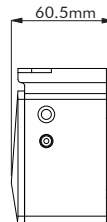
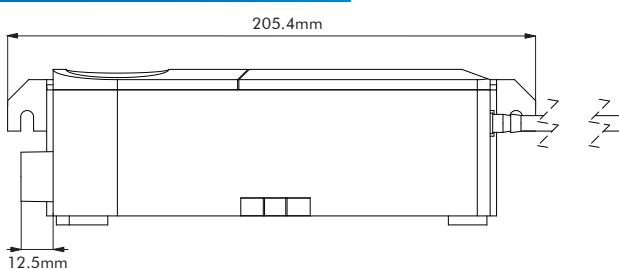
DURABLE DESIGN

Thanks to a strong outer casing the BLUEDIAMOND IP Pump can withstand far rougher treatment than comparable other pumps on the market.

PERFORMANCE



DIMENSIONS (MM)

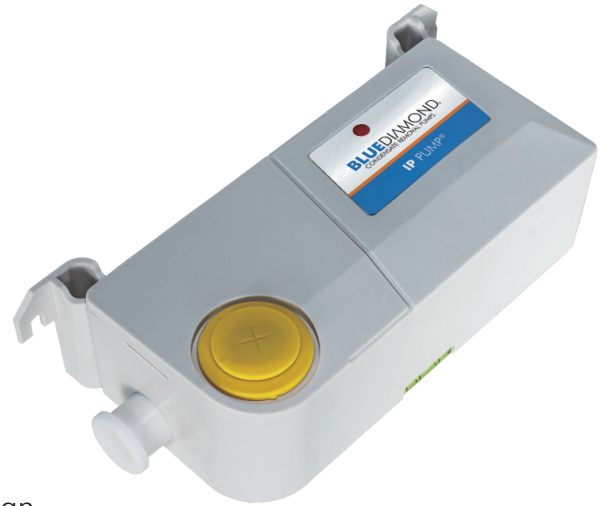


Suspended by threaded rod for ceiling units, or mounted directly in the drain pan, the IP Pump is quick and easy to install. A powerful pumping principle offers reliable performance with minimal sound and vibration.

Suitable for ducted units, cassette units and floor standing units, the IP Pump is a perfect fit for commercial installations.

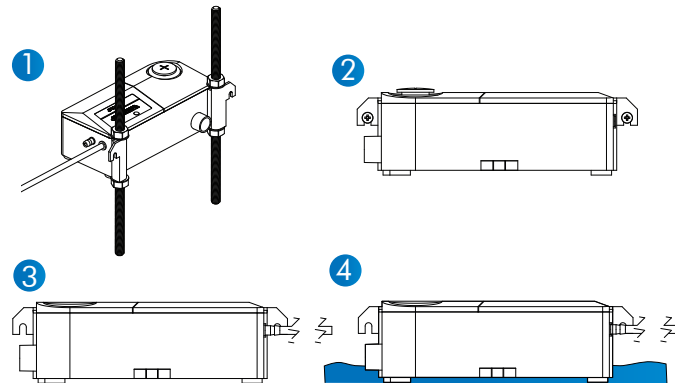
KEY FEATURES

- ✓ Easy maintenance.
- ✓ Can be located in drain pan.
- ✓ Compact & powerful.
- ✓ Multiple installation options.



SPECIFICATION

MAX. FLOW	35L/H @ 0M HEAD
MAX. REC. HEAD	15M
TANK CAPACITY	0.24L
SOUND LEVEL	35dB(A) @ 1M
POWER SUPPLY	230 VAC, 0.1A, 16W, 50/60HZ
CLASS	II APPLIANCE
MAX. UNIT OUTPUT	46KW / 157,000BTU/H
MAX. WATER TEMP	40 °C / 104 °F
INLETS	x2 22MM, 12MM & 27MM
OUTLETS	6MM & 10MM
IP PROTECTION	IP65
SAFETY SWITCH	3.0A NORMALLY CLOSED
FULLY POTTED	YES



- 1 ROD MOUNTED
- 2 WALL MOUNTED
- 3 FLOOR MOUNTED
- 4 PLACED IN DRIP TRAY